

HARTMANN & FORBES

WOVEN-TO-SIZE GRASSWEAVE





WOVEN-TO-SIZE

GRASSWEAVE

OUR SIGNATURE HANDWOVEN LINE

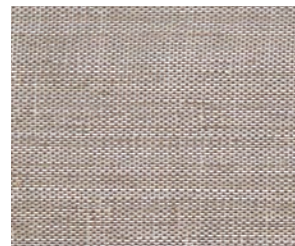
A modern collection of organic textures, earthy colors and sophisticated patterns. Artisanally handwoven of premium natural fibers, ranging from arrowroot, ramie, abaca, banana tree, vetiver root, palm leaf, water hyacinth and walingi.

ETHEREAL

Woven by hand of sheer banana fiber, this series expresses a delicate sensibility in four natural colorways. Ethereal's tonal, silky-soft fibers and natural sheen lend a light, refined look while subtle, hand-tied knots add a hint of relaxed texture.



LE5209 Gleam



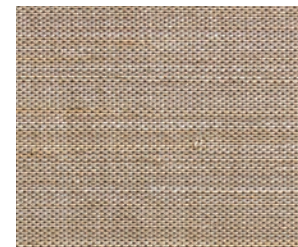
LE5212 Whisper



LE5206 Wispy **NEW**



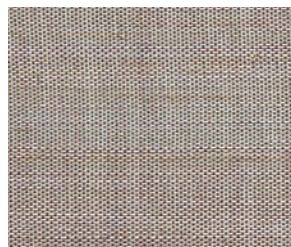
LE5215 Aire



LE5218 Sublime **NEW**



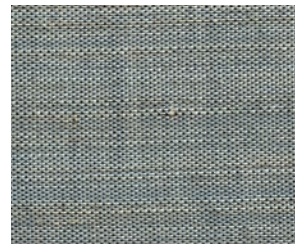
LE5227 Drift **NEW**



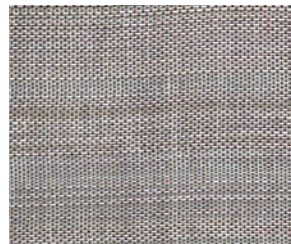
LE5239 Haze



LE5245 Serene **NEW**



LE5255 Celestial **NEW**



LE5260 Breeze

Price Group: 4 | Max Width: 180"
Available Styles: Roman, Roller, Top Treatment

Shown: LE5245 Ethereal – Serene, Roller Style





DASH

Loomed by hand of lightweight banana fiber, this understated series layers easily with a range of styles in four tonal colorways. A random weft pattern produces the design's subtle horizontal dash, creating a contemporary twist on classic striped patterns.



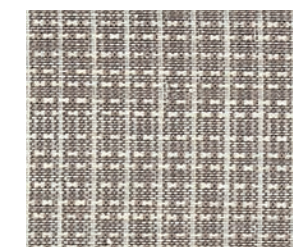
LE5803 Porcelain



LE5815 Ceramic



LE5832 Verde



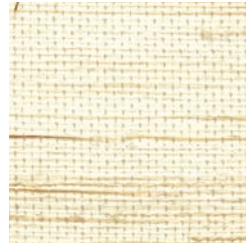
LE5839 Stone

Price Group: 4 | Max Width: 120"
Available Styles: Roman, Roller, Top Treatment

Shown: LE5815 Dash – Ceramic, Roller Style with Valance
WL426-12 Aleutian – Alpenglöw, Wallcovering

ELEMENTS

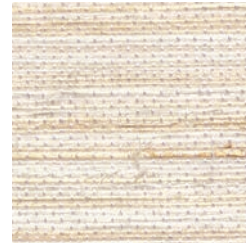
Fresh, pure and timeless, this richly refined linen-like textile offers sophisticated beauty in a wide array of colorways ranging from neutral hues to dramatic darker tones.



LE1006 Cambric



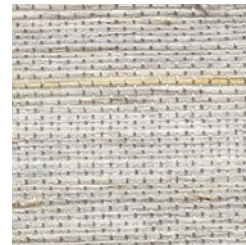
LE1053 Silesia



LE1062 Challis



LE1055 Sindon



LE1050 Sendal



LE1015 Cambresine



LE1054 Borato



LE1084 Zephyr



LE1087 Georgette

Price Group: 4 | Max Width: 180"
Available Styles: Roman, Roller, Top Treatment

Shown: LE1053 Elements – Silesia, Old Style Roman



Furnishings courtesy – Tiffany Home Design | Rug courtesy – Tufenkian Artisan Carpets



LE1107 Utara



LE1124 Togo



LE1109 Selatan



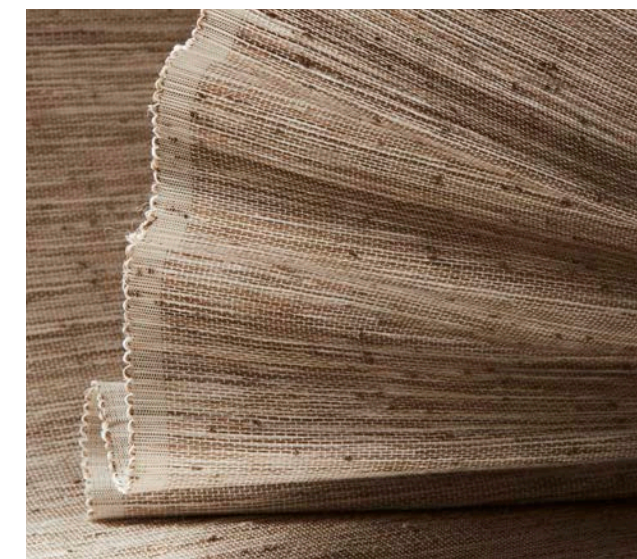
LE1160 Sapi



LE1187 Rinca

DRIFTWOOD

Inspired by the casual elegance of sun-washed driftwood, this design blends ivory with weathered hues of gold, grey and off-black.



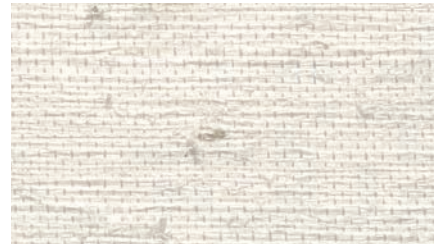
Price Group: 4 | Max Width: 180"
Available Styles: Roman, Roller, Top Treatment

Shown: LE1160 Driftwood – Sapi, Traditional Style Roman with Newton



GLIMMER

This lustrous fine weave is ethereal, almost weightless, accented with micro hand knots that inject a pared-down luxe aesthetic.



LE1003 Shantung



LE1051 Tulle



LE1303 Tamin



LE1360 Zanella



Price Group: 4 | Max Width: 180"
Available Styles: Roman, Roller, Top Treatment

Shown: LE1360 Glimmer - Zanella, Old Style Roman



INTERWOVEN

Playing with the drama of light and dark, edge-cut reeds fade in and out of the neutral ground for a unique chiaroscuro effect.



LE1057 Seychelles



LE1056 Camaca

Price Group: 4 | Max Width: 180"
Available Styles: Roman, Top Treatment

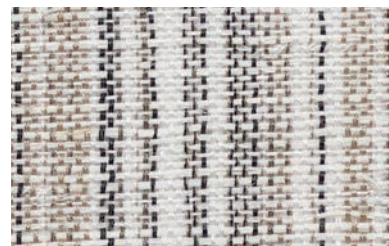
Shown: LE1057 Interwoven - Seychelles, Old Style Roman

TABARET

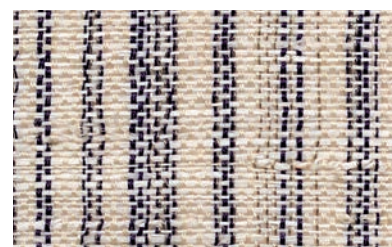
Influenced by vintage European linen, this handwoven textile of ramie fiber offers subtle variegated stripes in nature's hues, creating a harmonious mix of status and pedigree.



LE2630 Lawn



LE2660 Greylake



LE2657 Lagoon



LE2645 Brownstone

Price Group: 4 | Max Width: 180"
Available Styles: Roman, Roller, Top Treatment

Shown: LE2657 Tabaret - Lagoon, Old Style Roman



Rug courtesy - Tiffany Home Design



GLISTEN

A delicate accent of silvery filaments infuses this collection with metallic that sparkles under incandescent lighting.

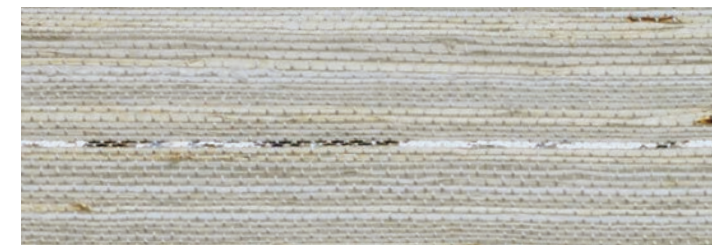


LE1403 Aura

No Roller



LE1421 Calcite



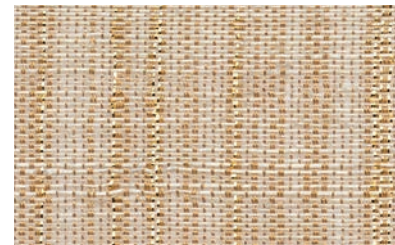
LE1423 Nautilus

Price Group: 4 | Max Width: 180"
Available Styles: Roman, Roller, Top Treatment

Shown: LE1421 Glisten - Calcite, Old Style Roman

RAINFALL

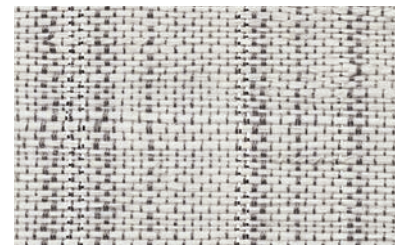
To create a pleasant variance, softly reflective metallic and colored warp threads dance with white ramie weft fibers in harmonious, handwoven choreography.



LE2021 Sunrise



LE2012 Dawn



LE2039 Dusk



PATHWAYS

Stripes are the hallmark detail in this collection of exquisite gauzy weaves. Presented either as open or feathered stripes.



LE1030 Vatulele



LE1032 Namale



LE1024 Hutan



LE1020 Awan

Price Group: 4 | Max Width: 180"
Available Styles: Roman, Top Treatment

Shown: LE2021 Rainfall – Sunrise, Old Style Roman

Price Group: 4 | Max Width: 180"
Available Styles: Roman, Top Treatment



Rug courtesy - Tufenkian Artisan Carpets

TARTAN

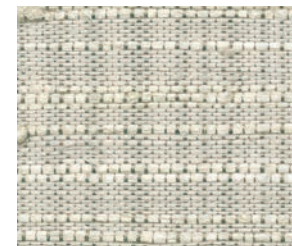
Artisans masterfully guide shuttles wound with handspun ramie, in variegated thicknesses, through a composition of colored threads to achieve this haberdashery-inspired tartan pattern. The occasional appearance of hand-tied knots enhances the design's tactile richness and approachability.



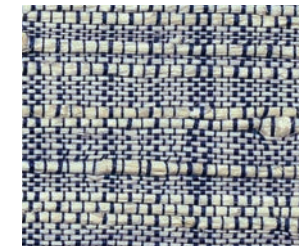
LE2203 Whitecap



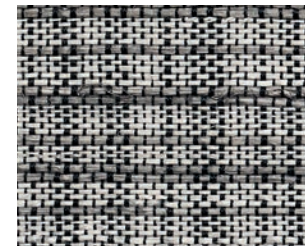
LE2212 Sandle



LE2215 Briarwood



LE2257 Lapis



LE2260 Cobblestone



Price Group: 4 | Max Width: 180"
Available Styles: Roman, Roller, Top Treatment

Shown: LE2212 Tartan - Sandle, Splitview™ Style



JAZZ

Inspired by the visual rhythm of classical guitar strings, the Jazz Series imbues the tonal qualities of a bygone era, yet leans toward the future.



LE4003 Arpeggio



LE4006 Tremolo



LE4021 Bridge



LE4060 Fusion



LE4045 Staccato



LE4087 Legato

Price Group: 4 | Max Width: 180"
Available Styles: Roman, Roller, Top Treatment

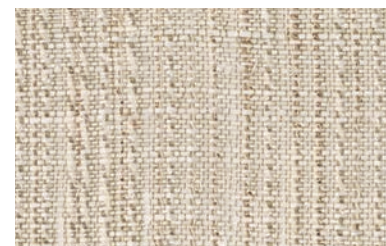
Shown: LE4087 Jazz – Legato, Roller Style with Flat Valance and Newton

AURA

A complex design with a spirited sensibility, this refined weave creates a gentle and meditative atmosphere.



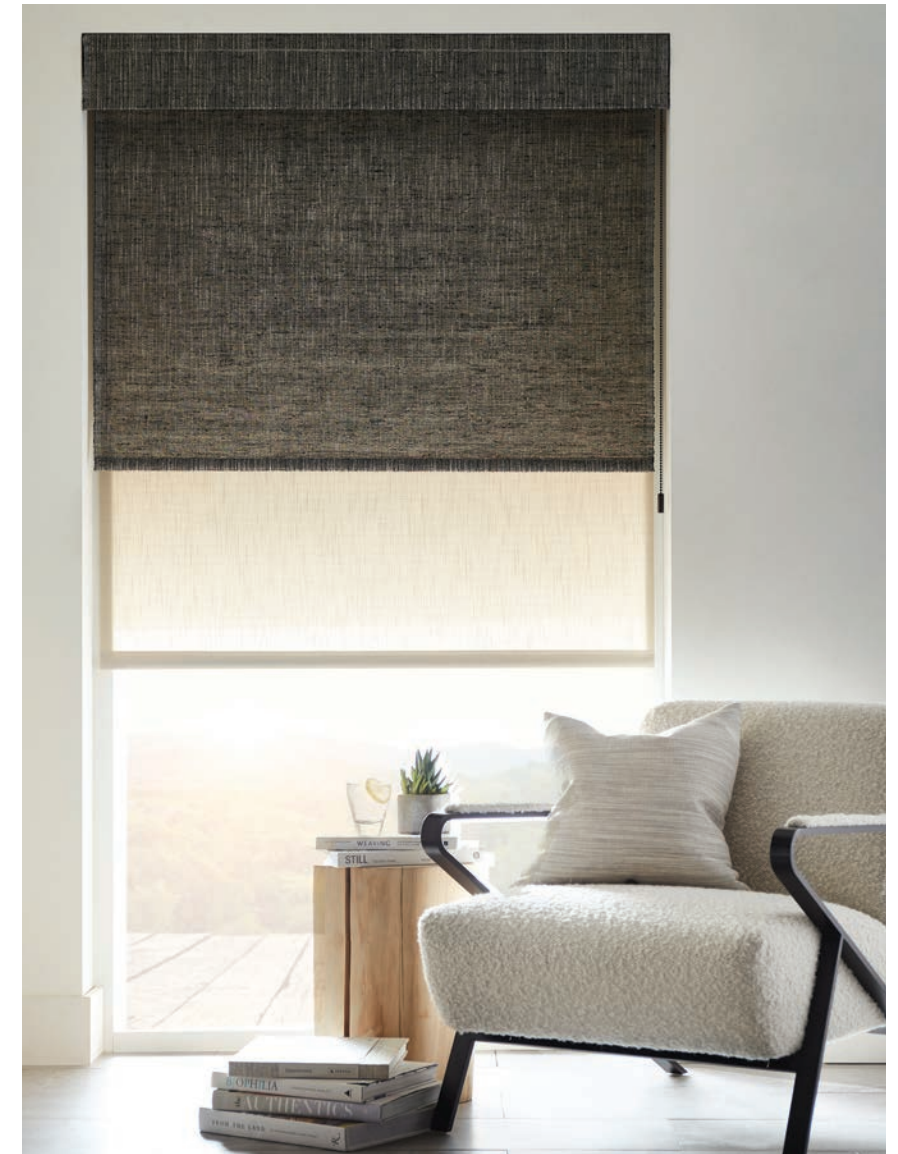
LE3303 Spirit



LE3312 Charisma



LE3309 Mystique



LE3315 Karma



LE3387 Chakra

Price Group: 4 | Max Width: 180"
Available Styles: Roman, Roller, Top Treatment

Shown: LE3387 Aura – Chakra, Roller with Flat Valance and Newton
U18 8000 – Khaki, Rollershade

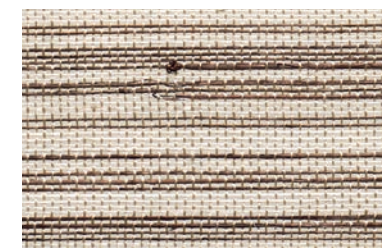


Rug courtesy - Tufenkian Artisan Carpets



TISSAGE

Inspired by horsehair weaving traditions, layers of chestnut, grey, caramel and cocoa are woven for a rich texture. Perfect for dramatic shading statements.



LE1218 Cremello



LE1239 Dapple



LE1242 Arabian



LE1257 Halus



LE1255 Sorrel

Price Group: 4 | Max Width: 180"
Available Styles: Roman, Roller, Top Treatment

Shown: LE1218 Tissage - Cremello, Rollerfold with Valance

CROSSHATCH

A chic interpretation of chambray fabric, this series is woven with palm fibers and Italian-inspired spun yarn that shows evidence of its innovative construction.



LE1606 Natural



LE1609 Wheat



LE1618 Flax



LE1639 Dust



LE1660 Thunder

Price Group: 4 | Max Width: 180"
Available Styles: Roman, Roller, Top Treatment

Shown: LE1660 Crosshatch - Thunder, Traditional Style Roman





Table courtesy – The Joinery | Chairs courtesy – Tiffany Home Design

WICKER

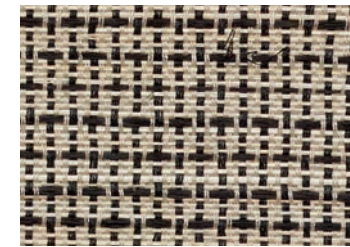
The legacy of hand-weaving wicker basketry and furnishings dates back to the ancient Mesopotamians. Inspired by this tradition, Wicker offers a superior balance of woven textures and natural hues.



LE4106 Cane



LE4136 Willow



LE4187 Rattan



Price Group: 4 | Max Width: 120"
Available Styles: Roman, Roller, Top Treatment

Shown: LE4136 Wicker – Willow, Old Style Roman



RHYTHM

Inspired by indigenous music tradition and its melodic essence, this artisanal textile series is handwoven using original foot-treadle looms. This intensive process results in patterned compositions that add a vibe of tribal heritage to an interior space.



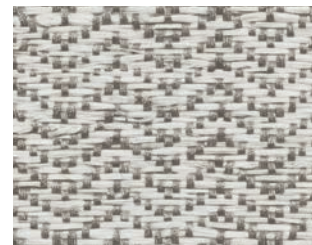
LE2912 Beat



LE2960 Pulse



LE2712 Chords



LE2739 Keys

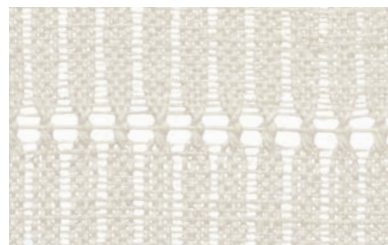


LE2781 Notes



Price Group: 4 | Max Width: 120"
Available Styles: Roman, Roller, Top Treatment

Shown: LE2781 Rhythm – Notes, Old Style Roman
LE2257 Tartan – Lapis [WTS] & TBD57 Diamond – Denim Handwoven Border Trim, Pillow



LE2303 Blanc



LE2306 Naturel

MACRAME

A bohemian expression with a free spirit, this uniquely woven natural textile is unassumingly elegant, offering a casual charm in its soft, muted color palette.



LE2336 Gris

Price Group: 4 | Max Width: 120"
Available Styles: Roman, Roller, Top Treatment

Shown: LE2336 Macrame - Gris, Old Style Roman



INTERBRAID

Intricately handwoven ramie braids in pale grey and golden wheat delicately rise above a finely woven field. The unique horizontal pattern has a gentle rhythm which lends a natural restfulness and comfort to a room.



LE1906 Blonde



LE1903 Champagne



LE1939 Ash



LE1960 Heather

MESA

Inspired by Southwestern weaving traditions, palm and ramie fibers in modern earth tones mingle with hand-placed water hyacinth strips for textural dimension. This tapestry-like design adds luxurious layers of warmth and artistic beauty to an interior.



LE2121 Adobe



LE2115 Pueblo



Price Group: 4 | Max Width: 180"
Available Styles: Roman, Top Treatment

Shown: LE2121 Mesa – Adobe, Traditional Style Roman & Pillow
WL414-12 Seaboard – Landing, Wallcovering

ILLUMINATION

A minimalist weave with subtle sheen for nonchalant luxury. Layered shadings of ivory and misty grey offer elegance and beauty.

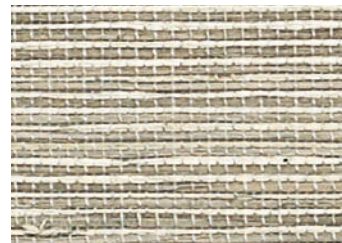


LE1301 Barege

No Roller



LE1292 Pasir



LE1064 Madras



LE1284 Bishan

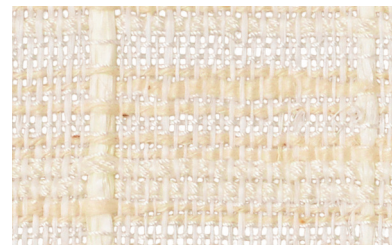


Price Group: 4 | Max Width: 180"
Available Styles: Roman, Roller, Top Treatment

Shown: LE1284 Illumination – Bishan, Traditional Style Roman

INTERWOVEN II

This intricate open weave evokes contemplation and relaxation with its nuanced palm, ramie and soft yarn textures.



LE2503 Imperial



LE2521 Delmar



LE2515 Solana



LE2536 Clearwater

THATCH

The beautiful texture of a thatched roof is the inspiration for this series, a medium-weight textile offering privacy and a casual point of view to an interior.



LE1703 Wrafton



LE1100 Cassimere



LE1805 Buckskin



LE2409 Root



LE2439 Stem

EARTHEN

Handwoven of vetiver, a hearty organic root fiber with a warm woody scent, this weave is grounded and earthy offering interiors a complex textural identity that is exotic, yet modern.



LE2487 Seed

Price Group: 4 | Max Width: 180"
Available Styles: Roman, Top Treatment

Shown: LE2409 Earthen - Root, Old Style Roman

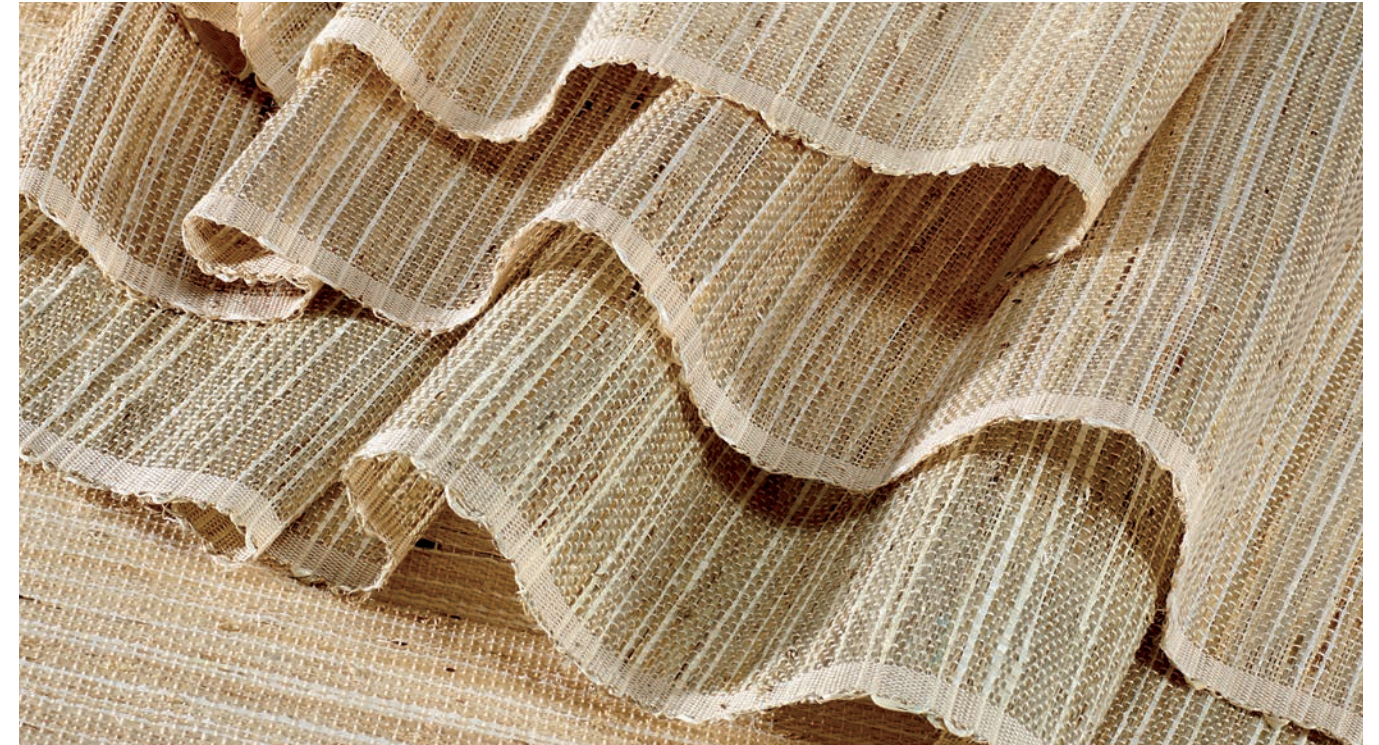


CABANA

Densely-woven contrasting fibers in subtle hues create a relaxed and approachable weave in a sand tone that evokes a laid-back island vibe.



LE1130 Palm



SHALE

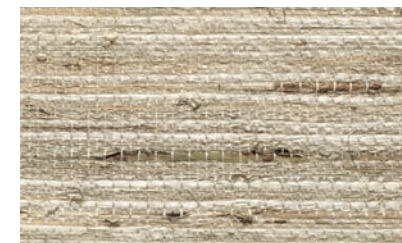
Referencing the raw beauty of high desert geology, naturalistic color bands are stacked to achieve a stria effect. Arrowroot fibers in shades of desert sand combine for tonal beauty.



LE1506 Sand



LE1512 Dune



LE1530 Sage

WOODSTOCK

A naturalistic design in deep woodland colors of walnut, moss and straw. This weave summons a cozy mountain feeling.



LE1169 Moorea

