

HARTMANN & FORBES

SPRING/SUMMER 2023

INTRODUCING
THE ERINN V.
COLLECTION

NEW DESIGNS
J. RANDALL POWERS
AMY MEIER
H&F STUDIO

LEADING THE REVOLUTION IN SUSTAINABLE DESIGN

This season we joined with one of the industry's top talents, Erinn V., to create a collection that reflects her California classic lifestyle and embodies her specific design language. In addition, you will find fresh updates from our other collaborators and talented in-house studio design team.

We are grateful, again, for your partnership in creating sanctuary through natural design. We hope our work may continue to encourage your journey to making a better and more sustainable tomorrow.

Yours In Nature,



Michael Jones,
Founder

WITH A DEEP-ROOTED LOVE OF NATURE, we promise to practice our trade honestly, ethically, and responsibly. To act in good conscience — always — and remain conscious of our duty to protect and preserve the planet.

In this spirit, we look to lead the world the best way there is: By example.

GLOBAL COMMUNITY

We believe authentic handmade products are forged when a close community of disparate people — farmers, weavers, craftsmen, and designers — come together with a common vision. All, in their own way, ignited by a passion for their craft that imbues their work with love, creativity, and soul.

ORGANIC FIBERS

We begin creating luxury woven products by choosing only the finest sustainable fibers, each rapidly renewable and grown in well-managed ecosystems. Every strand is hand-selected for subtle variations of color and texture.

WHOLE HEALTH

We are passionate about enhancing health, well-being, and happiness. We consider a holistic approach to a well-lived life and seek out practices that support one's inner peace and tranquility. We believe humanity can find sanctuary through natural design. We call it Sanctuary, by nature.™

PLANET-FRIENDLY

We live out our principles, and it shows. Every effort is made to reduce waste throughout the design, weaving, and production processes, and all packaging is created for end-of-life recyclability. We are proud to have been named one of Oregon's Top Green Businesses for over a decade.



ERINN V.

A CALIFORNIA STATE OF MIND

Founder of the award-winning design firm, Erinn V. Design Group, and ERINN V. furniture brand, as well as the visionary behind StyleRow, Erinn Valencich's signature look is synonymous with the classic California lifestyle. Based in Santa Barbara, her designs are distinguished by impeccable craftsmanship and luxe livability, creating dynamic spaces with a sense of drama. Erinn's wide-ranging work has been featured in such publications as Architectural Digest and ELLE DÉCOR and includes projects from coast to coast. Her collection by Hartmann&Forbes was inspired by the play of light through an open weave in the window and the natural textures and colors of the California Coast.





DOCKSIDE

Drawing inspiration from picturesque docks found along the west coast, Dockside's variegated stripes descend the relaxed ramie weave, evoking the profile of a pier and producing a play of texture and tension against the tonal, open ground.



LEEV52-03 Breakwater



LEEV52-09 Sandbar



LEEV52-36 Cove



LEEV52-87 Jetty



Woven-to-Size Grassweave
 OLD STYLE ROMAN SHADE
 LEEV51-03 Whitecaps - Swell

WHITECAPS

Evocative of waves breaking on the seashore, refined ramie is woven with richly dimensional ramie slubs that ebb and flow across the canvas, producing an artful, abstract pattern conjuring the look of cresting whitecaps.



LEEV51-03 Swell



LEEV51-06 Tide



LEEV51-09 Breaker

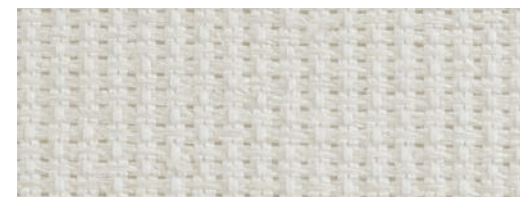


LEEV51-36 Surf

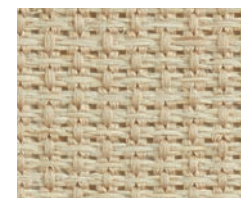


AT SEA

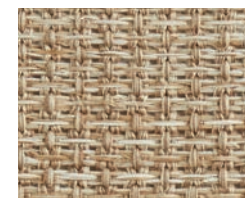
Inspired by traditional fishing nets, At Sea features an open weave hand loomed from natural palm and ramie fibers. Rendered in a range of coastal hues, the design's rhythmic, grid pattern gives the textural tableaux a sense of structure that suits formal and informal settings alike.



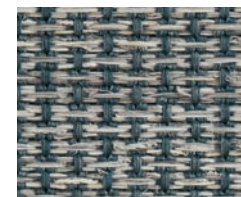
LEEV50-03 Sail



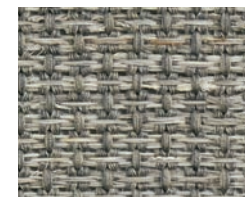
LEEV50-09 Sanddab



LEEV50-12 Halyard



LEEV50-57 Ocean



LEEV50-60 Reef



NEW
DESIGNS
FROM THE

J. RANDALL POWERS COLLECTION

J. Randall Powers drew inspiration from his collection of Native American baskets to create MORGAN, a gravure-printed wallcovering. Marked by a refined zigzag pattern, the wallcovering delivers visual dimension with a touch of playful flair.



WLJP27-09 Cognac



WLJP27-12 Taupe



WLJP27-33 Slate





WINDSOR Corded French textiles inspired this transitional series by J. Randall Powers. Windsor's tightly woven ramie ground is detailed with yarns that are individually twisted by hand into pencil lines. Their two-tone palette and horizontal relief offer a fresh take on a traditional striped design.



LEJP26-09 Cognac



LEJP26-15 Taupe



LEJP26-33 Slate





UPDATE
FROM THE **AMY**
MEIER
COLLECTION

This sophisticated, yet soothing wallcovering, FRAMEWORK, is a contemporary nod to the traditional chogak bo or patchwork style of Korean Bojagi. Blocks of woven paper in varying sizes are hand-placed in a restrained linear architecture that can be custom arranged to create specific styles and ambiances.



WLAM38-03 Alabaster



NEW DESIGNS
H&F 
 STUDIO

NATURAL WOVEN SHADES
GRASSWEAVE
MOTIFS™

CONTEMPORARY DESIGNS
 OF HISTORICAL PATTERNS

A visual representation of the concept of motifs, this new collection deploys repeating decorative patterns to artfully express emotions and ideas. Ranging from the geometric and abstract to the botanical and traditional, these intricate designs are handwoven of natural fibers on a jacquard loom for rich color and texture and a calming, rhythmic effect.



Woven-to-Size Grassweave
 OLD STYLE ROMAN SHADE
 LE6312 Canework – Ramil
Natural Wallcovering
 WL418-06 Island Coast – Shell

GRASSWEAVE MOTIFS
CANEWORK

Modeled after classic woven-cane chairs, this refined series is marked by a recurring geometric motif. The intricate design is jacquard-handloomed of natural banana fiber, crisscrossing the tonal ground in an elegant lattice pattern; the colors create contrast and visual dimension.



LE6312 Ramil



LE6315 Ramadi



LE6336 Hasa



LE6357 Azraq

GRASSWEAVE MOTIFS
PINISI

Traditional sailing vessels, known as pinisi, inspired this series, a modern take on traditional design. Jacquard-handloomed of ramie, Pinisi features a motif of the rigged boats in silhouette.

colors listed
top to bottom

LE6412 Pasir
LE6457 Laut
LE6436 Batu
LE6415 Abu

GRASSWEAVE ORIGINS

HEIRLOOM

Loomed entirely from textural strands of natural vetiver that are individually hand-placed, Heirloom brings earthy elan to an interior. Thin warp threads play delicate counterpoint to the wavy, roughhewn weft for an airy, organic design that beautifully filters the light.



LE5909 Branch



Woven-to-Size Grassweave
OLD STYLE ROMAN SHADE
LE5909 Heirloom – Branch
Natural Wallcovering
WL427-09 Savannah – Talahi



GRASSWEAVE ORIGINS
GENESIS

This elegant series produces a beautiful play of light through the filter of its open grassweave.

Slender, vertical stripes juxtaposed with a relaxed ramie base bring a modern spin to a classic design in colors that seamlessly coordinate with our Driftwood series.



LE6203 Cottonseed



LE6209 Flaxseed



LE6215 Grainseed



LE6236 Linseed

Woven-to-Size Grassweave
OLD STYLE ROMAN SHADE
LE6215 Genesis – Grainseed
Natural Wallcovering
WL417-45 Peninsula – Beach

STUDIO CONCEPTS
**CREEL
& PLAIT**

Meticulously jacquard-handloomed, Creel and Plait are distinguished by intricate weaves rendered in exotic, natural fibers and feature a rich interplay of texture and tone that lends a dimensional, artfully layered look.



LE6015 Studio Concepts – Plait
LE6109 Studio Concepts – Creel



Woven-to-Size Grassweave
OLD STYLE ROMAN SHADE
LE6109 Studio Concepts – Creel
Natural Wallcovering
WL428-09 Savannah – Ogeechee

DASH+ BARGELLO+ ALEUTIAN

The modern structure of a natural Woven-to-Size Roller Style shade behind soft folds of an Ertheweave® Roman Style shade complement the warmth and texture of a handcrafted wallcovering, creating the perfect sanctuary.

DASH



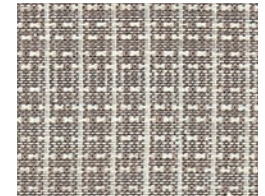
LE5803 Porcelain



LE5815 Ceramic



LE5832 Verde



LE5839 Stone

natural woven shades
GRASSWEAVE [WTS]

BARGELLO



EW152-03 Perla



EW152-12 Cachi



EW152-32 Menta



EW152-15 Grigio

fabric shades
ERTHEWEAVE

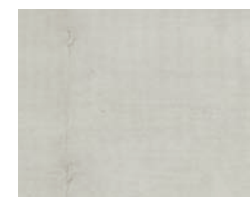
ALEUTIAN



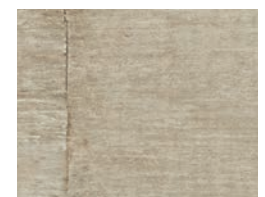
WL426-03 Glacier



WL426-12 Alpenglow



WL426-30 Verglass



WL426-15 Moraine

natural
WALLCOVERING

Ertheweave
OLD STYLE ROMAN SHADE
EW152-15 Bargello - Grigio
Woven-to-Size Grassweave
NATURAL ROLLER STYLE SHADE
LE5815 Dash - Ceramic
Natural Wallcovering
WL426-12 Aleutian - Alpenglow



natural woven shades
GRASSWEAVE [WTS]

ETHEREAL

Too perfect for this world, Gleam, a warm tan colorway, is added to the Ethereal series. Tonal, silky-soft fibers and natural sheen highlight this ultra-refined design, while subtle, hand-tied knots add a hint of relaxed texture.

LE5209 Gleam

NATURAL WALLCOVERING

SAVANNAH

Equal parts earthy and elegant, Savannah is reminiscent of beautiful river reeds that grow in southern rivers. Handwoven of raffia with rich textural and tonal contrasts, the wallcovering features designs that evoke the tall, grass-like plants and their natural palette.



WL428-09 Savannah - Ogeechee
WL427-09 Savannah - Talahi



For 10 years we have been recognized as one of the best green workplaces in Oregon.

Preserving the environment is part of who we are and what we do everyday.



Printed with zero VOC/
low energy and UV inks

PO Box 1149 | Tualatin, OR 97062 | hartmannforbes.com
t 503.692.9313 | 888.582.8780 | f 503.692.9315

©2023 HARTMANN&FORBES, INC