

J RANDALL POWERS
BY
HARTMANN & FORBES®

DESIGNER COLLABORATION





J. RANDALL POWERS

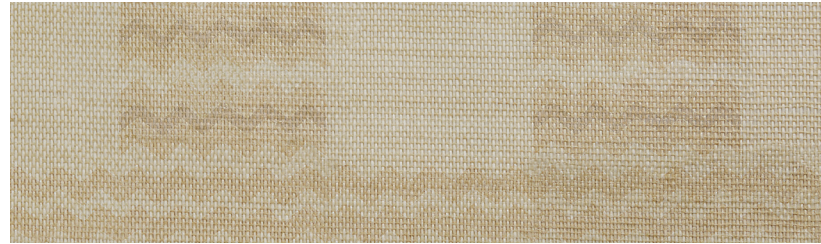
“THIS COLLECTION IS ABOUT THE
CONFIDENCE OF A STRUCTURED PATTERN,
TAILORED AND REFINED, BUT OF A SCALE
THAT IS PLAYFUL AND INVIGORATING”

Celebrated for his classic, yet cosmopolitan style, the
J. Randall Powers Collection reveals the artisanal quality
of Hartmann&Forbes' handwoven textiles combined with
Powers' penchant for tailored patterns with a playful twist.

WALLCOVERING – NEW

MORGAN

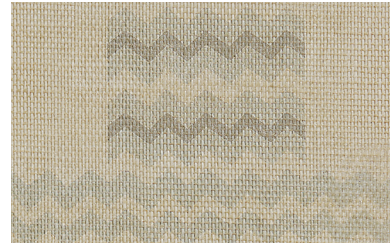
J. Randall Powers drew inspiration for this series from his collection of Native American baskets. Marked by a refined zigzag pattern that's gravure-printed in three natural tones on a jute-paper ground, the wallcovering delivers visual dimension and a touch of playful flair.



WLJP27-09 Cognac



WLJP27-12 Taupe



WLJP27-33 Slate



GRASSWEAVE [WTS] – NEW

WINDSOR

Corded French textiles inspired this transitional series by J. Randall Powers. Windsor's tightly woven ramie ground is detailed with yarns that are individually twisted by hand into pencil lines. Their two-tone palette and horizontal relief offer a fresh take on a traditional striped design.



LEJP26-09 Cognac



LEJP26-15 Taupe



LEJP26-33 Slate





CHRISTOPHER CHECK

A crisp windowpane pattern defines the Christopher Check Collection. Handwoven windowcovering of ramie, and gravure-printed wallcovering on a ground of natural sisal, are framed in bold hues, imparting a graphic punch that enlivens the rigorous geometry. Sophisticated yet friendly, it suits formal and informal spaces alike.

GRASSWEAVE [WTS]



LEJP21-72 Brick



LEJP21-33 Slate



LEJP21-18 Taupe

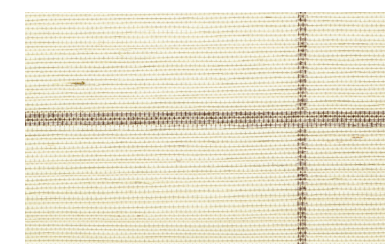
WALLCOVERING



WLJP24-72 Brick



WLJP24-33 Slate



WLJP24-18 Taupe

Window Price Group: 5 | Max Width: 180"
Available Styles: Roman, Top Treatment

Wall Width: 36" (91.4cm) | Length: 12yds (10.9m)

Shown: LEJP21-72 Christopher Check – Brick, Old Style Roman
WLJP24-72 Christopher Check – Brick, Wallcovering



GRASSWEAVE [WTS]

BALDWIN STRIPE

An open weave of yarns and dyed ramie form a relaxed rectangular motif. Its intricate warp and weft lending depth and detail to the interior geometry. Artfully accented with bands of color in a subdued, subtle palette of mist and cream, the vertical stripes add layers of tonal beauty to the gauzy ground.



LEJP23-36 Mist



LEJP23-06 Cream

Window Price Group: 5 | Max Width: 120"
Available Styles: Roman, Top Treatment

Shown: LEJP23-36 Baldwin Stripe – Mist, Traditional Style Roman





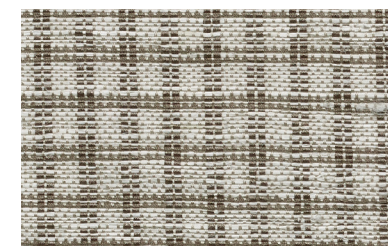
GRASSWEAVE [WTS]

APSLEY CHECK

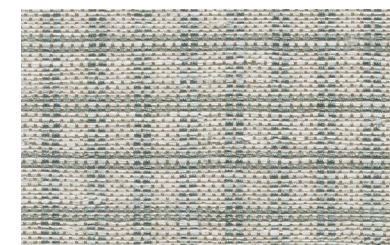
Clean-lined and classic, Apsley Check is defined by small, even squares that recall the timeless Shepherd's check. Woven of refined ramie, this weave evokes the textural, lightweight hand of linen and pairs beautifully with the geometric Christopher Check series.



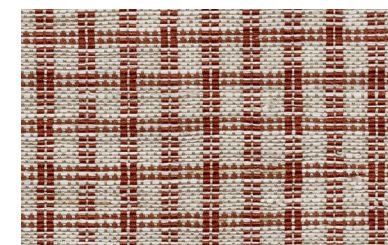
LEJP20-03 White



LEJP20-18 Taupe



LEJP20-33 Slate



LEJP20-72 Brick

JG PLAID

A fresh take on traditional plaid, strong crisscrossing pencil stripes in an irregular sequence form an intriguing dimensional look. A woodland palette of moss and linen play relaxed counterpoint to the structured sensibility.

Woven-to-Size windowcovering is intricately handloomed of refined ramie, while handcrafted wallcovering is gravure printed atop handwoven sisal.

GRASSWEAVE [WTS]



LEJP22-12 Moss on Linen

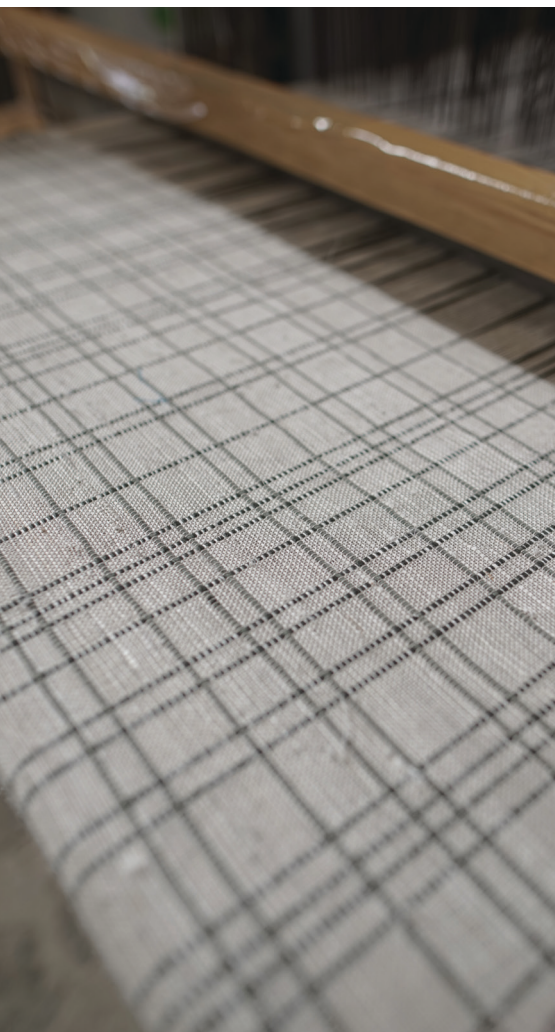


LEJP22-78 Linen on Moss

WALLCOVERING



WLJP25-78 Linen on Moss



Window Price Group: 5 | Max Width: 180"
Available Styles: Roman, Top Treatment

Wall Width: 36" (91.4cm) | Length: 12yds (10.9m)

Shown: LEJP22-12 JG Plaid – Moss on Linen, Old Style Roman
WLJP25-78 JG Plaid – Linen on Moss, Wallcovering

Rug courtesy – Tufenkian Artisan Carpets