

AMY MEIER

BY

HARTMANN & FORBES®

DESIGNER COLLABORATION





AMY MEIER

“IT WAS MY INTENTION FOR THESE WEAVES
TO WORK AND PLAY OFF EACH OTHER,
CREATING A FAR RICHER COMPOSITION”

Renowned for an aesthetic that seamlessly blends tradition and innovation, Meier's collection deftly fuses inspiration from Japanese design, the Bauhaus School, and traditional Korean cloth, using the naturally beautiful Hartmann&Forbes handwoven textiles to express the organic yet highly structured design.



FRAMEWORK

WALLCOVERING - NEW

Blocks of woven paper in varying sizes are hand-placed in a restrained linear architecture that can be custom arranged to create specific styles and ambiances with this wallcovering.



WLAM38-03 Alabaster



LEAM37-03 Alabaster

GRASSWEAVE [WTS]

The large repeating windowpane motif is inspired by the chogak bo or patchwork style of Korean Bojagi. Masterfully jacquard-handloomed of banana fiber, the textural geometry of this windowcovering brings dimension and differing opacities to the quiet, monochromatic composition.



Window Price Group: 5 | Max Width: 100"
Available Styles: Roman

Wall Width: 36" (91.4cm) | Length: By-the-Yard

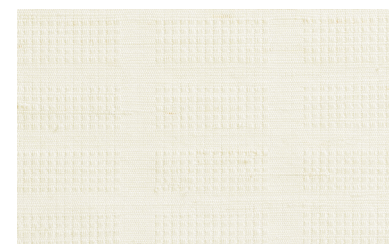
Shown: WLAM38-03 Framework – Alabaster, Wallcovering



GRASSWEAVE [WTS]

STIPPLE

Informed by the crisp geometry of the Bauhaus, while capturing the quiet restraint of Japanese design, Stipple is distinguished by its soothing subtlety. Against a ground of refined ramie, a series of small, woven squares produce intriguing nuances in texture and dimension, its neutral palette lending it tonal beauty.



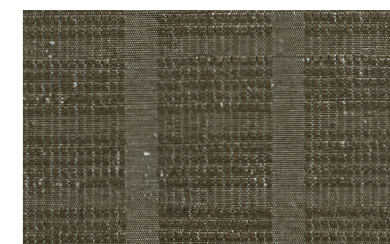
LEAM36-03 Alabaster



LEAM36-06 Opaline



LEAM36-09 Haze



LEAM36-42 Chestnut

Window Price Group: 5 | Max Width: 100"
Available Styles: Roman, Top Treatment

Shown: LEAM36-03 Stipple - Alabaster, Old Style Roman

888.582.8780 | HARTMANFORBES.COM



GRASSWEAVE [WTS]

JOINERY

Paying homage to Bauhaus textile designer Anni Albers, this weave balances the structure of industry with a natural, organic sensibility. Rectangles and squares jacquard-handloomed of textural ramie and multicolored warp fibers form a complex geometry that conjures images of newsprint on a page.



LEAM34-09 Newsprint

GRASSWEAVE [WTS]

FRET

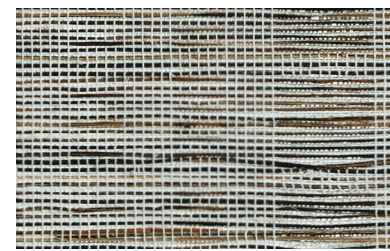
Inspired by the lustrous look of natural horsehair, Fret features an earthy, variegated palette of banana fiber handwoven with black warp thread.

The understated design, with its refined texture and iridescent beauty, feels both timeless and current.



LEAM35-87 Alloy





LEAM33-66 Tortoise

GRASSWEAVE [WTS]

STITCH

Stitch balances the linear architecture of the Bauhaus with the soft, natural appeal of Japanese designs. Multicolored abaca is freely hand-placed through an orderly framework of jacquard-handloomed ramie, creating a compelling play of tension and texture and a subtle sense of movement.

Window Price Group: 5 | Max Width: 100"
Available Styles: Roman, Top Treatment

Shown: LEAM33-66 Stitch - Tortoise, Old Style Roman



GRASSWEAVE [WTS]
GOSSAMER

Bojagi, a traditional Korean silk patchwork that becomes more beautiful and translucent with age, served as the inspiration for this tonal series. Alternating tight and loose weaves, rendered in ramie and warp threads, produce a beautifully irregular striped pattern, and its natural drape and rich texture highlights Gossamer's handwoven quality and the Japanese aesthetic of wabi-sabi.



LEAM31-03 Strie Chalk



LEAM32-03 Hatch Chalk



Window Price Group: 5 | Max Width: 180"
Available Styles: Roman, Top Treatment



GRASSWEAVE [WTS]

DAPPLE

True to its namesake, Dapple evokes the dreamy look of sunlight peeking through leaves on a tree. The gauzy ground of handwoven ramie plays host to a freeform grid of ramie slubs. The raised, textural design softly filters the light and lends relaxed refinement to an interior.



LEAM30-03 Parchment

Window Price Group: 5 | Max Width: 180"
Available Styles: Roman, Top Treatment

Shown: LEAM30-03 Dapple - Parchment, Old Style Roman