

HARTMANN & FORBES

SPRING/SUMMER 2022

INTRODUCING
THE AMY MEIER
COLLECTION

H&F STUDIO
DESIGN UPDATE

2022 REFERENCE KIT

“THERE IS NO MEDICINE LIKE HOPE,
NO INCENTIVE SO GREAT,
AND NO TONIC SO POWERFUL
AS EXPECTATION OF SOMETHING
BETTER TOMORROW.”

~ ORISON SWETT MARDEN




I FIND THIS SIMPLE QUESTION to be as obscure as it is profound: Is humanity driven by the need for hope, just as we are by life's essential elements like air and water?

Or perhaps, do we each breathe fresh hope into life each day, in the course of our own journey?

In the grand scheme of things, it likely doesn't matter. What matters is we remember that hope exists—and make the choice to grow it within our sphere of influence—in order to make the world better.

This year it was refreshing to design alongside our newest collaborator, Amy Meier. Experiencing firsthand her passion for the details of her craft, her innate drive for perfection, and her raw ambition to see a preferred future made of her creations. To Amy, life is somehow better because something new is created, and in no small way, that matters!

We are grateful for our collaborators and for your partnership in creating sanctuary through natural design. We hope our work may continue to encourage your journey in making a better tomorrow.

In Nature,

Michael Jones,
Founder



AMY MEIER

COLLECTION BY

HARTMANN&FORBES®

Amy Meier is renowned for a unique, refined, and authentic design aesthetic that seamlessly blends tradition and innovation. Founder and principal designer of the Rancho Santa Fe-based Amy Meier Design and Amy Meier, a specialty boutique, Amy's projects have been published in such magazines as House Beautiful, Veranda, and ELLE DECOR, and she was named a Traditional Home Rising Star in 2017 and one of Veranda's Next Legends for 2022. Her new collection by HARTMANN&FORBES deftly fuses inspiration from Japanese design, the Bauhaus School, and traditional Korean cloth to create a compelling, cohesive collection of multi-dimensional textiles.





Woven-to-Size Grassweave
 OLD STYLE ROMAN SHADE
 & WALL SCONCE
 LEAM36-03 Stipple - Alabaster
 LAMP SHADE & CHAIR UPHOLSTERY
 LEAM34-09 Joinery - Newsprint
 PRIVACY SCREEN
 LEAM37-03 Framework - Alabaster

STIPPLE

INFORMED BY the crisp geometry of the Bauhaus, while capturing the quiet restraint of Japanese design, Stipple is distinguished by its soothing subtlety. Against a ground of refined ramie, a series of small, woven squares produce intriguing nuances in texture and dimension, its neutral palette lending it tonal beauty.



LEAM36-09 Haze



LEAM36-03 Alabaster



LEAM36-06 Opaline



LEAM36-42 Chestnut



Woven-to-Size Grassweave
OLD STYLE ROMAN SHADE
LEAM33-66 Stitch - Tortoise
WALL SCONCE
LEAM35-87 Fret - Alloy



JOINERY pays homage to Bauhaus textile designer Anni Albers, balancing the structure of industry with a natural, organic sensibility. Rectangles and squares jacquard-handloomed of textural ramie and multicolored warp fibers form a complex geometry that conjures images of newsprint on a page.

LEAM34-09 Joinery - Newsprint

STITCH balances the linear architecture of the Bauhaus with the soft, natural appeal of Japanese designs. Multicolored abaca is freely hand-placed through an orderly framework of jacquard-handloomed ramie, creating a compelling play of tension and texture and a subtle sense of movement.

LEAM33-66 Stitch - Tortoise

FRET was inspired by the lustrous look of natural horsehair, featuring an earthy, variegated palette of banana fiber handwoven with black warp thread. The understated design, with its refined texture and iridescent beauty, feels both timeless and current.

LEAM35-87 Fret - Alloy

GOSSAMER

BOJAGI, a traditional Korean silk patchwork that becomes more beautiful and translucent with age, served as the inspiration for this tonal series. Alternating tight and loose weaves, rendered in ramie and warp threads, produce a beautifully irregular striped pattern, and its natural drape and rich texture highlight Gossamer's handwoven quality and the Japanese aesthetic of wabi-sabi.



LEAM31-03 Gossamer - Strie Chalk



LEAM32-03 Gossamer - Hatch Chalk



FRAMEWORK

THE LARGE REPEATING WINDOWPANE MOTIF is inspired by the chogak bo or patchwork style of Korean Bojagi. Masterfully jacquard-handloomed of banana fiber, the textural geometry brings dimension and differing opacities to the quiet, monochromatic composition.

LEAM37-03 Framework - Alabaster



Woven-to-Size Grassweave
OLD STYLE ROMAN SHADE
LEAM31-03 Gossamer - Strie Chalk
LAMP SHADE
LEAM32-03 Gossamer - Hatch Chalk



DAPPLE

TRUE TO ITS NAMESAKE, Dapple evokes the dreamy look of sunlight peeking through leaves on a tree. The gauzy ground of handwoven ramie plays host to a freeform grid of ramie slubs. The raised, textural design softly filters the light and lends relaxed refinement to an interior.

LEAM30-03 Dapple - Parchment



Woven-to-Size Grassweave
OLD STYLE ROMAN SHADE
LEAM30-03 Dapple - Parchment



REBECCA WELCH, DESIGN DIRECTOR

“IN THE STUDIO, we aim to design products that are conscientious and soul-satisfying, delivering a balance of restorative beauty and time-honored craftsmanship – products that are sustainably made in every sense of the word.”

DESIGNING FOR A BETTER TOMORROW

SUSTAINABLE FIBERS | RICH COLORWAYS | REFINED TEXTURES

PAPYRUSWEAVE

A zen-inspired collection, the new Reflection series offers a modern flair in Woven-to-Size craftsmanship.

SOFT NATURAL FABRIC

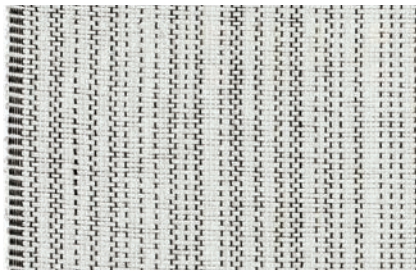
A Weathered, Cords, and Fields series update plus a Brushed series refresh, milled in one of Europe's most revered linen mills.

PERFORMANCE FABRIC

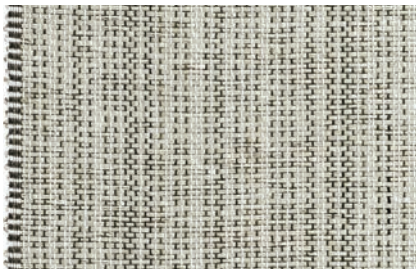
The re-introduction of the high performance, sustainably made Ecoweave and an updated Solarweave 5000 series.

REFLECTION

LIGHTWEIGHT PAPYRUS produces a rich textural backdrop for refined threading in this soothing series. Reimagining classic designs, the rhythmic black-and-white warp forms an open, irregular stripe pattern bordered by a distinctive finished edge that frames the design.



PE609-87 Meditative Black



PE609-36 Insightful Grey



NATURAL WOVEN SHADES
woven-to-size grassweave

CUSTOM HANDWOVEN EDGE

The Grassweave Essence Collection is a foundational design with a customizable woven edge. Select from any of our twenty-five sophisticated colors and add a custom warp edge to create a tone-on-tone or contrasting edge design.

Custom edge: ¼" to 5"W

Standard edge: ¾"W



Edge



Inset Edge



Striped Edge



Woven-to-Size Grassweave
ROLLER STYLE SHADE
LE3012 Essence - Sand
Custom tone-on-tone 2" warp

CORDS

Elegance with a rustic twist, this design features tufted cords artistically embroidered onto a heavy linen ground. As wearable as fashion, this contemporary textile will dress any window in chic style.



EW109-15 Canvas



EW109-21 Cloth



EW109-54 Knapsack



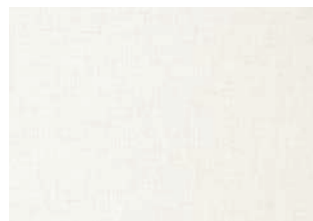
100% MADE IN EUROPE

Soft Natural Fabric
OLD STYLE ROMAN SHADE
EW109-15 Cords - Canvas
Woven-to-Size Grassweave
ROLLER STYLE SHADE
LE3015 Essence - Muslin

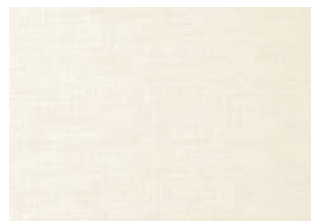


BRUSHED

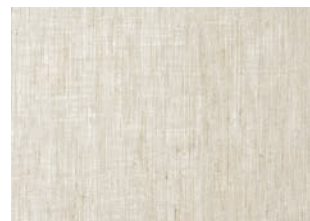
A soft textured sheer linen milled in the Belgium countryside. Offered in a palette of neutrals to work harmoniously in the home and to coordinate with our natural woven shades.



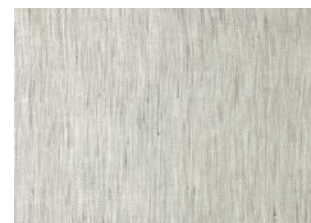
EW151-03 Amaryllis



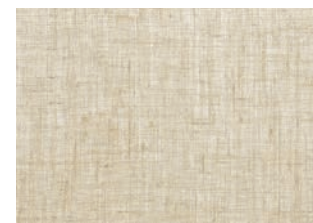
EW151-06 Lily



EW151-09 Foxtail



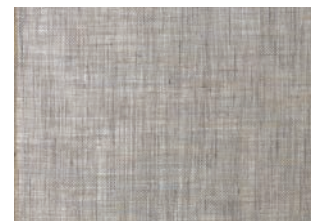
EW151-15 Silverdust



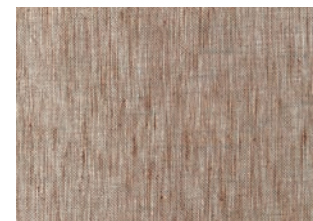
EW151-27 Millet



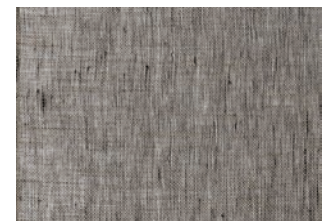
EW151-36 Thistle



EW151-39 Seaholly



EW151-45 Allspice



EW151-87 Hollyhock



WEATHERED

The natural stone-washed palette of this soft, medium-weight linen delivers an easygoing attitude embodying a lived-in, carefree lifestyle.

EW104-57 Weathered – Bluestone
EW104-30 Weathered – Greenstone

FIELDS

A perfect expression of harmony in design. This linen beautifully blends two distinct textures into one evocative pattern. Gentle earth tones and visual texture from vertical warp fibers evoke images of undulating flax fields at harvest.

EW148-06 Fields – Loam





EC100-60 Pyrite

EC200-60 Pyrite

EC100-15 Quartzite

EC200-15 Quartzite

EC100-12 Gneiss

EC200-12 Gneiss

EC100-09 Epidote

EC200-09 Epidote

EC100-06 Calcite

EC200-06 Calcite

EC100-03 Agate

EC200-03 Agate

ECOWEAVE®

ECO 100 TRANSLUCENT | ECO 200 BLACKOUT

THE NEW ECOWEAVE not only solves the challenges of performance environments but also offers a lower-impact alternative to other performance options. Crafted from man-made materials, this Greenguard-certified, PVC-free fabric is tightly woven with a rich texture and tailored feel in versatile earth tones that complement our range of natural woven shades.



SW5066 Sarcodon

SW5091 Parasol

SW5062 Belete

SW5012 Beech

SOLARSCREEN 5000 UPDATE

This design combines rich, textured yarns with traditional patterns in natural rich earth tones. Woven from vinyl coated polyester and uncoated polyester yarns, these fabrics are as durable as they are beautiful.

2022 REFERENCE KIT

FEATURING our complete natural product collections, the 2022 Reference Kit launches Spring '22 and is comprised of three pieces which include: Product Portfolio, Style Guide and Price List.

PRINTED ON FSC CERTIFIED PAPER
ZERO VOC, LOW ENERGY & UV INKS



ORDER



PRODUCT PORTFOLIO

The Product Portfolio artfully displays over 200 pages of inspirational photography and weave detail from the H&F Studio Collections and Designer Collaborations.



MICHAEL S. SMITH



J. RANDALL POWERS



AMY MEIER

DESIGNERS

Building upon a reputation for innovation, Designer Collaborations bring a unique background, fresh perspective, and inspiration to weave design.



MAX HUMPHREY



REBECCA WELCH

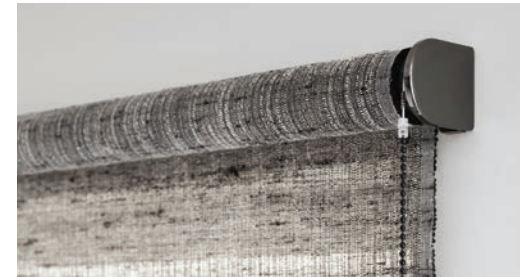
STYLE GUIDE

Used in tandem with the Product Portfolio and Price List, the Style Guide provides an upgraded visual presentation of each style, specifications, and design considerations along with available options and upgrades.

NEW LAYOUT



STYLES | METHODS OF OPERATION | OPTIONS | UPGRADES



PRICE LIST

The Price List provides measuring instructions, fabric details, worksheets, and pricing—all are supported by our concierge service. Contact your local showroom representative or the H&F customer relations team for quoting and ordering support.



SHOWHOUSE & PROJECT

GALLERY

HAMPTON DESIGNER SHOWHOUSE

For the past 21 years, the Hampton Designer Showhouse has been the showcase for some of America's premier design talent and raising nearly \$2M for Stony Brook Southampton Hospital. We were privileged to work with two of the 20 top interior designers who transformed a magnificent, historic 1830s Hampton House into a decorating modern masterpiece.



MONTECITO ATELIER

California-based designer Erinn Valencich transformed this Montecito home into an Atelier, with luxury in motion from H&F.

Photos: Jason Bush



KITCHEN

Woven-to-Size Grassweave

OLD STYLE ROMAN SHADE
SONESSE WIREFREE ULTRA 30
LE4339 Studio Concepts - Tweed

BEDROOM

Woven-to-Size Grassweave

ROLLERFOLD SHADE
NEWTON RECHARGE
LE4003 Jazz - Arpeggio

Soft Natural Fabric

BY-THE-YARD | DRAPERY
EW109-06 Cords - Cotton



KITCHEN

Tailored-to-Size Papyrusweave

TRADITIONAL STYLE ROMAN SHADE
PW157-33 Woolen Mill - Sky

Designer: Kate Singer

Photo: Marco Ricca

BATH

Natural Wallcovering

WL418-33 Island Coast - Sea Mist

Designer: Shannon Wiley

Photo: Michele Scotto Trani



We are honored to be recognized as a top company in our home state this year, and proud to have been ranked a top green company for the past nine years, including #6 this past year.



Printed with zero VOC/
low energy and UV inks

PO Box 1149 | Tualatin, OR 97062 | hartmannforbes.com
t 503.692.9313 | 888.582.8780 | f 503.692.9315

©2022 HARTMANN&FORBES, INC