

# HARTMANN & FORBES®

20<sup>TH</sup> ANNIVERSARY EDITION





**CELEBRATING 20 YEARS  
OF HANDWOVEN LUXURY**

a story of design, craftsmanship and restoration



Since our humble beginnings in 1998, we have been fueled by a passion for designing and weaving unique textiles of sustainable fibers for luxury windowcoverings. Over the years, we have organically grown to now offer the largest handwoven natural shade collection in the industry, and an ever expanding selection of natural wallcoverings and fabrics.

Our 20 year journey has been a true collective, forged by a diverse group of people. We are a rich community woven together by a common ideology; farmers, weavers, craftsmen and designers bonded by a common vision to create interior spaces that deliver a better human experience through beauty and restoration.

In our view, spaces that solicit slowing down, being still and restful are an essential precondition for a life of balance, healing and wellness. Our conviction is that people, communities and nations need more healing. So today, what drives us forward and fundamentally sets us apart, is that we are focused exclusively on creating products that reflect this transformational point of view.

As we celebrate this milestone, we want to thank you for being a part of our story. Our achievements are only possible because of your support and we are grateful to have the opportunity to serve your design needs. We hope that you enjoy the new 2018 woven-to-size shade collections.

We look forward to many more years of collaboration.

Cheers,  
Michael Jones  
Founder



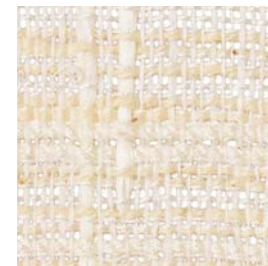


**SUTEKI HOUSE**  
designer – tiffany home designs  
photo – gregory specht  
architect – kengo kuma and assoc.

## INTERWOVEN II

balanced textures in soft tones

This intricate open weave evokes contemplation and relaxation with its nuanced palm, ramie and soft yarn textures.



LE2503 Imperial



LE2515 Solana



LE2521 Delmar



LE2536 Clearwater | shown



HARTMANNFORBES.COM



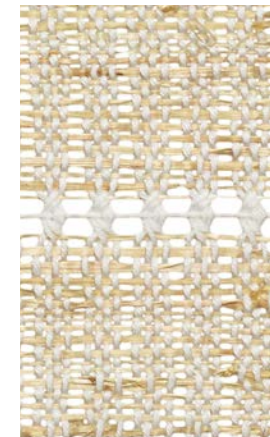
## MACRAMÉ

free-spirited design

A bohemian expression with free spirit, this uniquely woven natural textile is unassumingly elegant, offering a casual charm in its soft, muted color palette.



LE2303 Blanc



LE2306 Naturel



LE2336 Gris



## INTERLACE

elegant fibers and sunlight unite

Soliciting an interplay between light and fiber, this innovative yarn-warp structure and gauze-like ramie fibers candle incidental light in a graceful dramatic dance.



LE3209 Tawny



LE3215 Ember | shown



## AURA

glamour meets rustic elegance

A complex design with a spirited sensibility, this weave of refined ramie and arrowroot creates a gentle and meditative atmosphere.



LE3303 Spirit




LE3312 Charisma



LE3309 Mystique



LE3315 Karma

A stack of several rolls of fabric. The top roll is a light green and white striped pattern. Below it is a roll of light brown fabric. The next roll is a dark grey fabric with a fine, woven texture. Below that is a roll of dark blue and white striped fabric. The next roll is a light brown fabric with a fine, woven texture. The bottom roll is a light brown and white striped pattern. The rolls are stacked and slightly offset, showing the texture and color of each fabric.

LE2630 Lawn

LE2660 Greylake

LE2657 Lagoon

LE2645 Brownstone

## **T A B A R E T**

an imperial undertone

Influenced by vintage European linen, this handwoven textile of ramie fiber offers subtle variegated stripes in nature's hues, creating a harmonious mix of status and pedigree.

Coordinates beautifully with the  
NEW Essence Series *p14*





**ESSENCE**

a vibrant impression

With a simple and pure narrative, this foundational weave is offered in sophisticated colorways, providing universal appeal with its refined beauty and lightweight design.

LE3015 Muslin

LE3057 Denim

LE3018 Sterling

LE3054 Sprig



# EARTHEN

a touch of the exotic

Handwoven of vetiver, a hearty organic root fiber with a warm woody scent, this weave is grounded and earthy offering interiors a complex textural identity that is exotic, yet modern.



LE2409 Root | shown



LE2439 Stem



LE2487 Seed

## RHYTHM

a melodic ensemble

Inspired by indigenous music tradition and its melodic essence, this artisanal textile series is handwoven using original foot-treadle looms. This intensive process results in patterned compositions that add a vibe of tribal heritage to an interior space.



LE2712 Chords



LE2739 Keys



LE2781 Notes



LE2812 Tempo



LE2839 Encore



LE2912 Beat



LE2960 Pulse





## COLLECTION REFRESH

new colorways of celebrated designs

Taking creative liberty to reissue some of the best designs of recent years, the Grassweave Collection – DRIFTWOOD, ILLUMINATION, TARTAN, and TRESTLE are updated with a fresh color palette of grey, sandstone, and off-black.

The elegantly modern Papyrusweave® Collection – SERENITY and HARMONY are updated with new warp options in relaxed colorblends of camel, grey and white.



LE1160 Sapi



LE1187 Rinca

DRIFTWOOD



HARTMANNFORBES.COM



ILLUMINATION



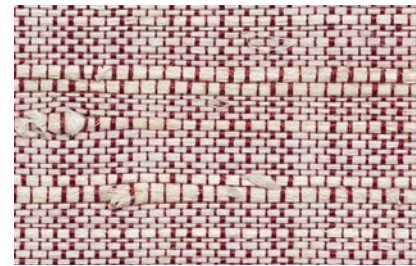
LE1284 Bishan



TRESTLE



LE1336 Samet



LE2272 Sandstone



TARTAN





SERENITY



HARMONY



PE603-21 Blissful Bark



PE603-21w Blissful Bark 5" warp



PE603-63 Warm Slate



PE603-63w Warm Slate 5" warp



PE603-15 Kind Grey



PE603-15w Kind Grey 5" warp



PE602-51 Healing Agate



PE602-63 Noble Slate



**SHOWHOUSE  
GALLERY**



top

**NAPA VALLEY  
SHOWHOUSE**

NAPA VALLEY, CA  
designer: robin heard  
photo: david duncan livingston

LE2021 Rainfall – Dawn  
Woven-to-Size Grassweave

bottom

**HAMPTON DESIGNER  
SHOWHOUSE**

SOUTHAMPTON, NY  
designer: brady design  
photo: marco ricca

PE602-09 Harmony – Blended Raffia  
Woven-to-Size Papyrusweave

opposite

**MANSIONS IN MAY  
SHOWHOUSE**

MORRISTOWN, NJ  
designer: maria k bevill  
photo: peter rymwid

LE2203 Tartan – Whitecap  
Woven-to-Size Grassweave





WINDOWCOVERINGS, WALLCOVERINGS AND TEXTILES  
HANDCRAFTED OF SUSTAINABLE NATURAL MATERIALS



PO Box 1149 | Tualatin, OR 97062 | [hartmannforbes.com](http://hartmannforbes.com)  
t 503.692.9313 | 888.582.8780 | f 503.692.9315

©2018 HARTMANN&FORBES, INC

